

PLC WORKSHOP FOR SIEMENS S5

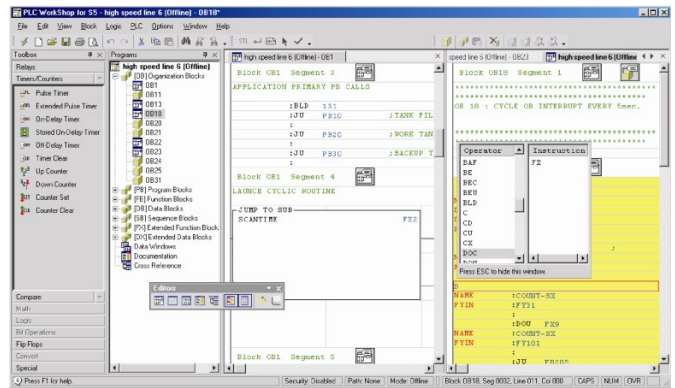


Developed using .NET technology, *PLC WorkShop™ for Siemens S5™* is a PLC programming software application that offers programming in both Ladder Logic and Statement List. *PLC WorkShop for Siemens S5* supports most S5 PLCs* from 90U through 155U.

PLC WORKSHOP SUITE FOR SIEMENS S5

Offering a flexible programming environment and configurable user interface, PLC WorkShop:

- Incorporates symbolic programming and utilizes an instruction toolbar and mnemonics
- Contains built-in data acquisition capabilities
- Records program changes in an Activity Audit Trail
- Displays a dynamic real-time address Cross Reference list for convenient address tracking
- Utilizes powerful NT security management (Windows Authentication) with password protection
- Supports networked printers and provides print preview capabilities
- Provides multiple documentation options
- Offers the ability to import and export address documentation



Use a Competitor Product?

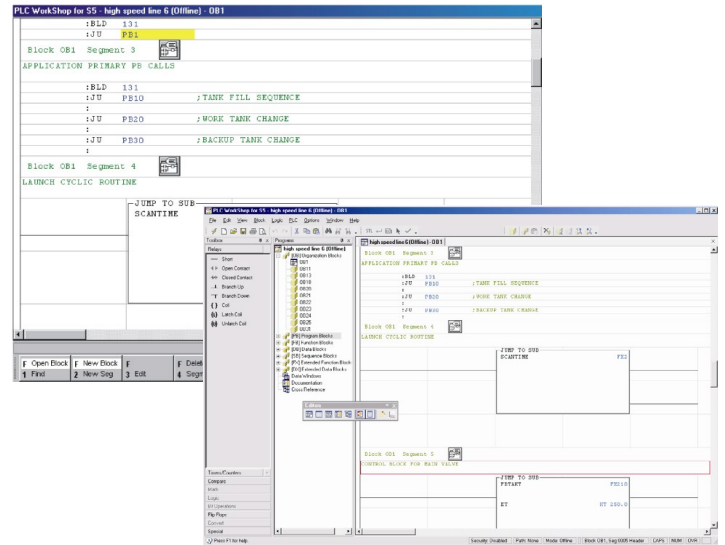
Step 5 files can be easily imported in just one step.

* PLC WorkShop does not support 101U PLCs. Refer to the last page for a complete list of the PLCs that are supported.

PLC WORKSHOP FOR SIEMENS S5

With PLC WorkShop you can:

- Open multiple PLC programs and data windows
- Concurrently connect online with multiple PLCs
- Transfer offline logic to the PLC in one easy step
- Import Step 5 files in seconds
- Merge specific blocks
- Troubleshoot with Network Cross-Reference, Program Compare, and Data Window
- Choose from numerous print options, including Print Preview and Print-to-Text File
- Print charts from the Data Window
- Save Ladder/Statement List and documentation in a single file reducing disk space and facilitating file management



Compared to the DOS alternative, FasTrak's PLC WorkShop offers a superior PLC programming experience. Because it supports all Windows operating systems — from Windows 98 through 10 — PLC WorkShop is highly accessible software offering exceptional ease of use. PLC WorkShop also supports networked printers, a feature that is not available in DOS software. This software utilizes NT security management (Windows Authentication) with password protection, providing complete administrator control and auditing of all user operations.

PLC WorkShop offers impressive functionality that obsolete software cannot match.

PLC WorkShop allows you to:	You benefit by:
Open multiple PLC Programs, as well as data windows, at a time	Saving time and effort when comparing PLC programs and copying components from one program to another
View real-time address Cross Reference	Eliminating the need for printing address Cross Reference
Compare files	Determining differences between programs quickly and efficiently
Concurrently connect online with multiple PLCs	Programming all of your PLCs on a single computer at the same time
Configure the user interface	Customizing PLC WorkShop to your specific needs and preferences
Configure printouts	Reducing your printing costs by previewing your output on screen before you commit to paper
Record and trend real-time and historical data from multiple PLCs	Analyzing your process to minimize inefficiencies and maximize productivity.

PLC WORKSHOP FOR SIEMENS S5

SPECIFICATIONS

Customer Service

When you contact us for support, you will receive immediate and accurate solutions to your questions resulting in less downtime. You will have access to the engineers who design our software packages.

Site Licenses

Keyless site licenses are available, which eliminate tracking and losing keys.

Annual Maintenance Agreements

Following expiration of the one-year warranty period, maintenance agreements—which include unlimited technical support—are available for purchase on an annual basis.

PLC Support

Supports S5 PLCs from 90U through 155U including:

90U; 95U; 100U 100, 102, 103; **115U** 941, 942, 943, 944, 945;
135U 928A, 928B; **150U** 926; 155U 946/7

Windows Compatibility

Designed and tested under Windows 98, NT, 2000, XP, Vista, 7 (32-bit), 8 (32-bit), and 10 (64-bit).

Ease of Use

Allows advantage of powerful Windows functions such as Cut, Copy, and Paste.

Communications Support

Supports H1 Communications for IEEE 802.3 Industrial Ethernet as well as Serial Communications (COM1 – COM 4).

SCADA

Contains built-in SCADA capabilities for up to 5 data points including data logging and trending with high speed, reliable OPC communications.

NT Security

Incorporates one-time, server-based security configuration, complete administrator control of all editing, save and load functions, documentation, program set-up, and auditing of all user operations.

Activity Audit Trail

Provides the ability to track program changes.

Step 5 Conversion

Step 5 files can be loaded and used to ease the transition from Step 5.

PLC WorkShop and ControlShop are trademarks of FasTrak SoftWorks, Inc. Simatic is a registered trademark, and S5 and Step 5 are trademarks of Siemens. Windows is a registered trademark of Microsoft Corporation. Other product names mentioned herein are used for identification purposes only and may be trademarks of their respective companies.